

Supplement of Earth Syst. Sci. Data, 9, 115–131, 2017
<http://www.earth-syst-sci-data.net/9/115/2017/>
doi:10.5194/essd-9-115-2017-supplement
© Author(s) 2017. CC Attribution 3.0 License.



Open Access
Earth System
Science
Data

Supplement of

A complete glacier inventory of the Antarctic Peninsula based on Landsat 7 images from 2000 to 2002 and other preexisting data sets

J. Huber et al.

Correspondence to: Jacqueline Huber (jhuber@access.uzh.ch)

The copyright of individual parts of the supplement might differ from the CC-BY 3.0 licence.

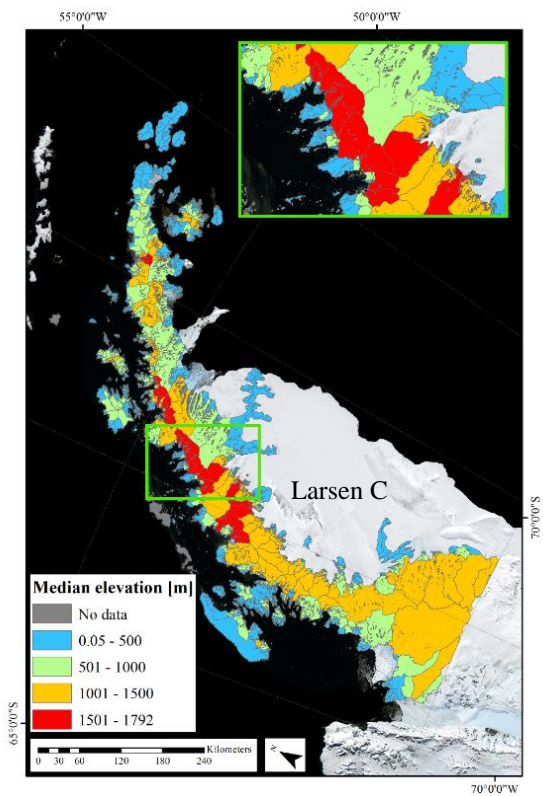
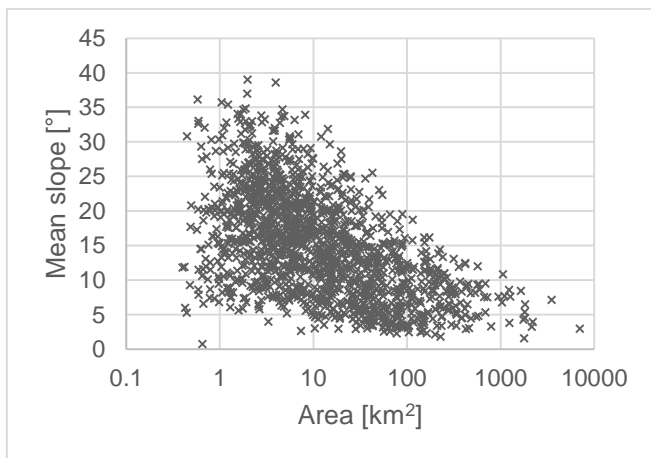


Figure S1. Color-coded glacier areas for visualization of the median elevation for 1541 glaciers.



5 Figure S2. Mean glacier slope vs. glacier area of 1541 glaciers.

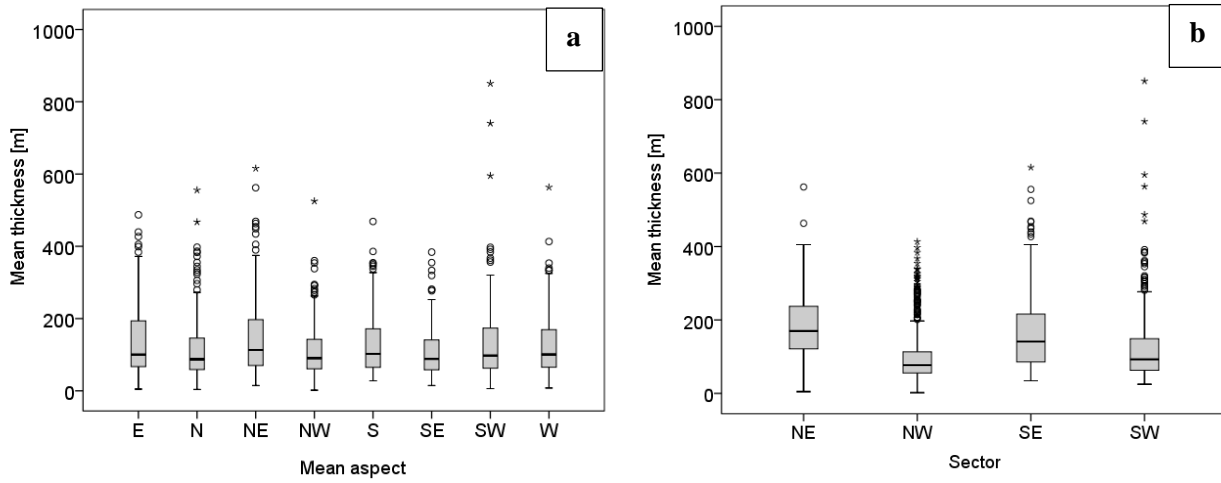
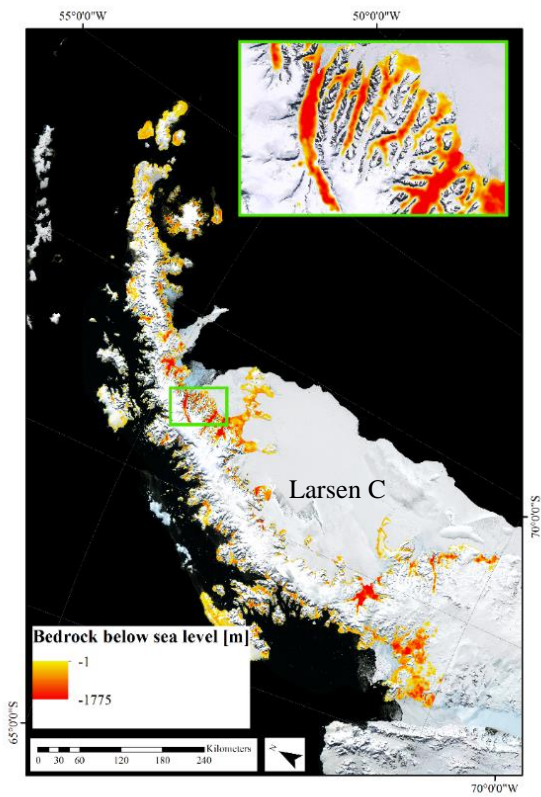


Figure S3. Boxplots of a) mean thickness per mean aspect and b) mean thickness per sector of the 1539 glaciers including thickness information. **The top and bottom of the boxes indicate the 25th and 75th percentiles, respectively. The whiskers extend to 1.5 times the height of the box and to the minimum values, respectively.**



20 Figure S4. Negative elevation values representing the bedrock below sea level.